



Jefferson High School EXECUTIVE SUMMARY

PROVIDED BY FINDORFF

700 W. Milwaukee Street • Jefferson, WI 07.12.2024

What's New at Jefferson High School?

We are already a third of the way through summer, time is flying by here, and the Jefferson High School project has made some big "additions" recently. Findorff concrete crews have completed the main concrete slab pour in the Skills Lab Addition. Nearby, Findorff masonry crews are finishing up masonry veneer on the exterior of the Skills Lab Addition. Just next door in the Autos Shop, industrial crews are working to remove the existing paint on the shop ceiling using sand/media blasting. MEP (mechanical, electrical, plumbing) crews, alongside other trades, have set final rooftop units, and they continue through the Classrooms and Shop areas on rough-ins as they install the new systems in their dedicated spaces. Finishes are also making headway as drywall finishing and painting crews are beginning their work in the Food Lab/Head House areas. Progress has been great, and we look forward to bringing you more in a couple of weeks!

Progress Update

- Final masonry veneer work at the Skills Lab Addition
- Exterior glazing installation at the Skills Lab Addition
- Drywall finishing and painting in the Food Lab/Head House areas
- MEP overhead rough-ins at the Skills Lab Addition

Upcoming Work

- Ceiling grid and border installation starting in the Food Lab/Head House areas
- Wall and ceiling structure painting in the Classroom and Shop areas
- Site storm sewer tie-in and exterior concrete at the Skills Lab Addition



Slab joint layout lines snapped by Findorff concrete crews after the finishing touches were put on the slab floor in the Skills Lab Addition.



Mechanical crews working to set the final rooftop mechanical units that will serve future classroom and shop spaces.

DID YOU KNOW?

Last week, Findorff concrete crews put the project's largest concrete pour in place at the Skills Lab Addition. Once sealed, this nearly 70-yard concrete floor will serve as the finished floor for the Skills Lab. To put the scale of this concrete pour into perspective, the cubic yardage used here would be similar to filling up a standard-sized swimming pool entirely with concrete.



Questions?

Project Manager, Jonathan Winch / (608) 219-5091 / jwinch@findorff.com

Project Engineer, Brennan Sullivan / (920) 319-2077 / bsullivan@findorff.com

Findorff
BUILDING & BEYOND



East Elementary EXECUTIVE SUMMARY

PROVIDED BY FINDORFF

//////////////////// 120 S. Sanborn Ave • Jefferson, WI ////////////////////// PAGE 2

Currently at East Elementary...

It has been all-hands-on-deck over at East Elementary. Steel wall framing has been installed in the new office area and the MEP systems have been roughed into that framing. This stage of construction is interesting because it allows you to see each component inside the wall like the metal studs, plumbing, and insulation. Check out the picture in the bottom left.

Along with the MEP systems, crews are installing masonry walls and drywall. Pretty soon crews will be installing tiling and flooring!

Recently

- Window Replacement
- MEP Rough-Ins
- Insulation and Drywall Installation

Coming Up Next

- Continued Window Replacement
- Wall Tiling
- Flooring Installation
- Roof Gutters and Slate Roofing Replacement



New front entry canopy framing!



This image is a great showcase of the metal stud framing, plumbing, blocking, and drywall that fits inside the finished wall.



MEP system rough-ins in the main office. Looking Good!

Questions?

Project Manager, Jonathan Winch / (608) 219-5091 / jwinch@findorff.com

Project Engineer, Maura Cannon / (714) 747-4844 / mcannon@findorff.com

Findorff
BUILDING & BEYOND



West Elementary EXECUTIVE SUMMARY

PROVIDED BY FINDORFF

900 W. Milwaukee Street • Jefferson, WI PAGE 3

Over at West Elementary...

With summer in full swing, work is non-stop at West Elementary. The new ramp in the library was recently poured along with all the concrete infills for the bathrooms. Big changes are coming to West as the new generator is coming soon.

Recently

- MEP System Rough-Ins
- Interior Wall Framing
- Concrete Ramp Poured

Looking Ahead

- Generator Installation
- Continued Interior Framing
- Flooring Installing



Metal stud framing along with the he freshly poured ramp in the library complies with ADA codes.



Metal stud walls creating the new Special Education rooms.



New masonry wall by the Library.

Questions?

Project Manager, Jonathan Winch / (608) 219-5091 / jwinch@findorff.com

Project Engineer, Maura Cannon / (714) 747-4844 / mcannon@findorff.com

Findorff
BUILDING & BEYOND



Sullivan Elementary EXECUTIVE SUMMARY

PROVIDED BY FINDORFF

206 S. Taft Ave • Jefferson, WI PAGE 4



New window openings with the steel lintel in place.

Meanwhile, in Sullivan...

Sullivan Elementary School is looking better than ever! Crews continue to install masonry walls and above-ceiling MEP system rough-ins.

Cut outs were made for the new windows and steel lintels were placed on top of the openings. When a new opening is made for something such as a window, a lintel is used to support the weight of the structure above.

Recently

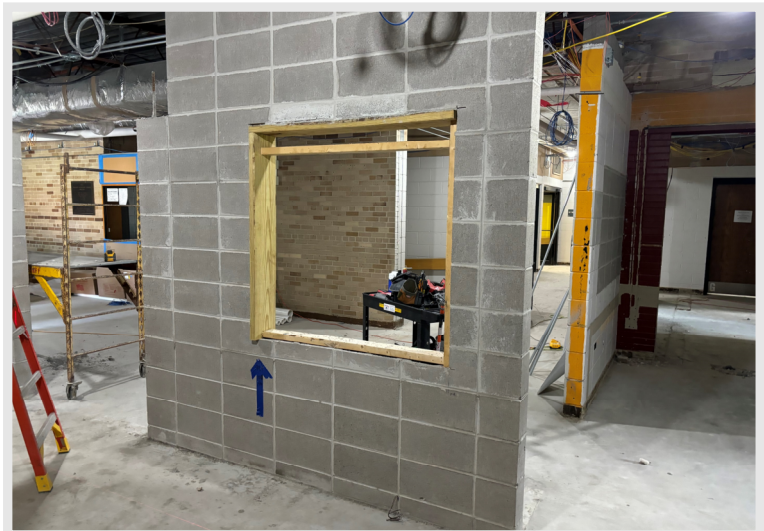
- MEP System Rough-Ins
- Masonry Wall Installation
- Steel Lintels Placed for New Windows

Coming Up Next

- Continued Interior Wall Framing
- Continued Masonry Wall Installation
- MEP System Rough-Ins



One of the few new concrete infills.



More masonry walls in the new reception area.

Questions?

Project Manager, Jonathan Winch / (608) 219-5091 / jwinch@findorff.com

Findorff
BUILDING & BEYOND